



PADDLE FLOW SWITCH

Committed To Quality,
Pursuing Excellence.



+91 9773483120

+91 9723109373



info@jkoverseas.in

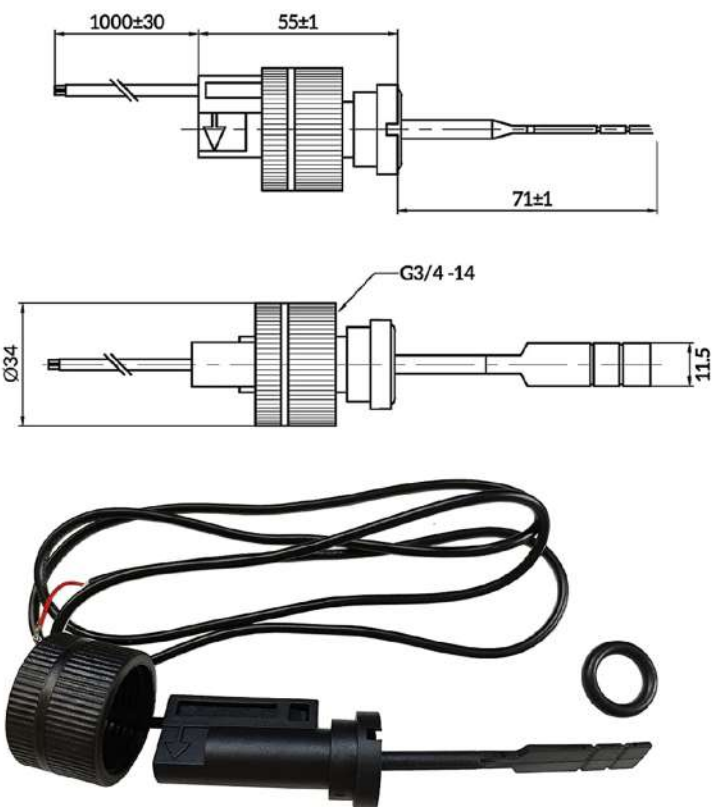


www.jkoverseas.in

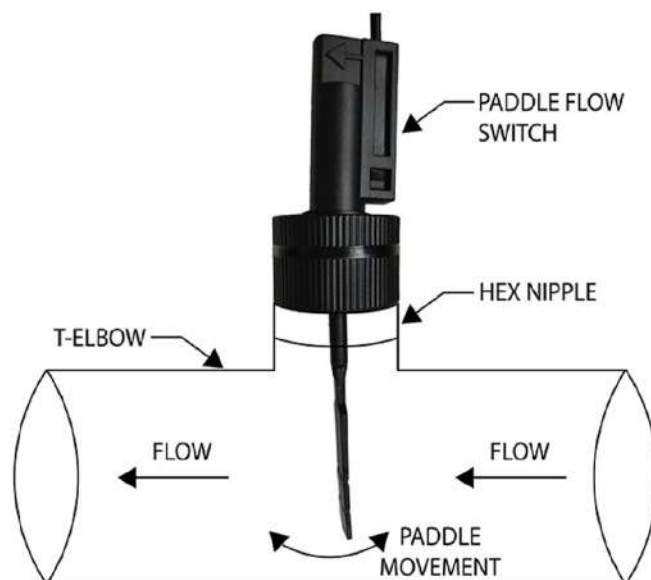
TECHNICAL DRAWING



J K OVERSEAS®



*ALL DIMENSIONS ARE IN MM



TECHNICAL SPECIFICATIONS

• ELECTRICAL SPECIFICATIONS :

Contact Form	NO (Normally Open)
Max Contact Power	50 W
Max Switch Voltage	350 VDC / 300 VAC
Min Breakdown Voltage	600 VDC
Max Switch Current	0.7 ADC / 0.5 AAC
Max Carry Current	2.5 A
Max Contact Resistance	100 mΩ
Min Insulation Resistance	1010 Ω
Get In Electric Shock Life	107 Ω
Electric Life	1 * 10 ⁷ (5 VDC, 10 mA)

• FEATURES :

Switch	PP
Thread	G3/4"
Mounting Position	Vertical
Operating Temperture	- 10 ~ + 85° C
Applicable Environment Temperture	- 40 ~ + 120° C
Withstand Voltage	1000 V/10 s
Insulation Resistance	100 min
Min Flow Rate	≥ 1.5 L / Min
Max Carry Pressure	1.2 MPa



OUR FLOW SWITCH APPLICATION



Water / Oil Chiller



Gov Waterline

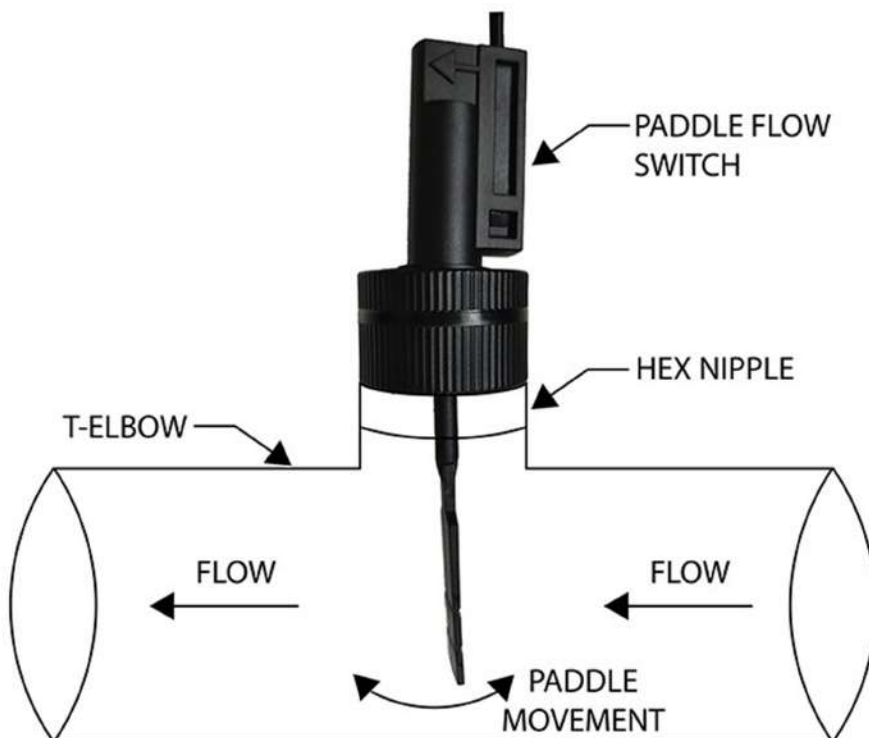


Water Pump/Motor



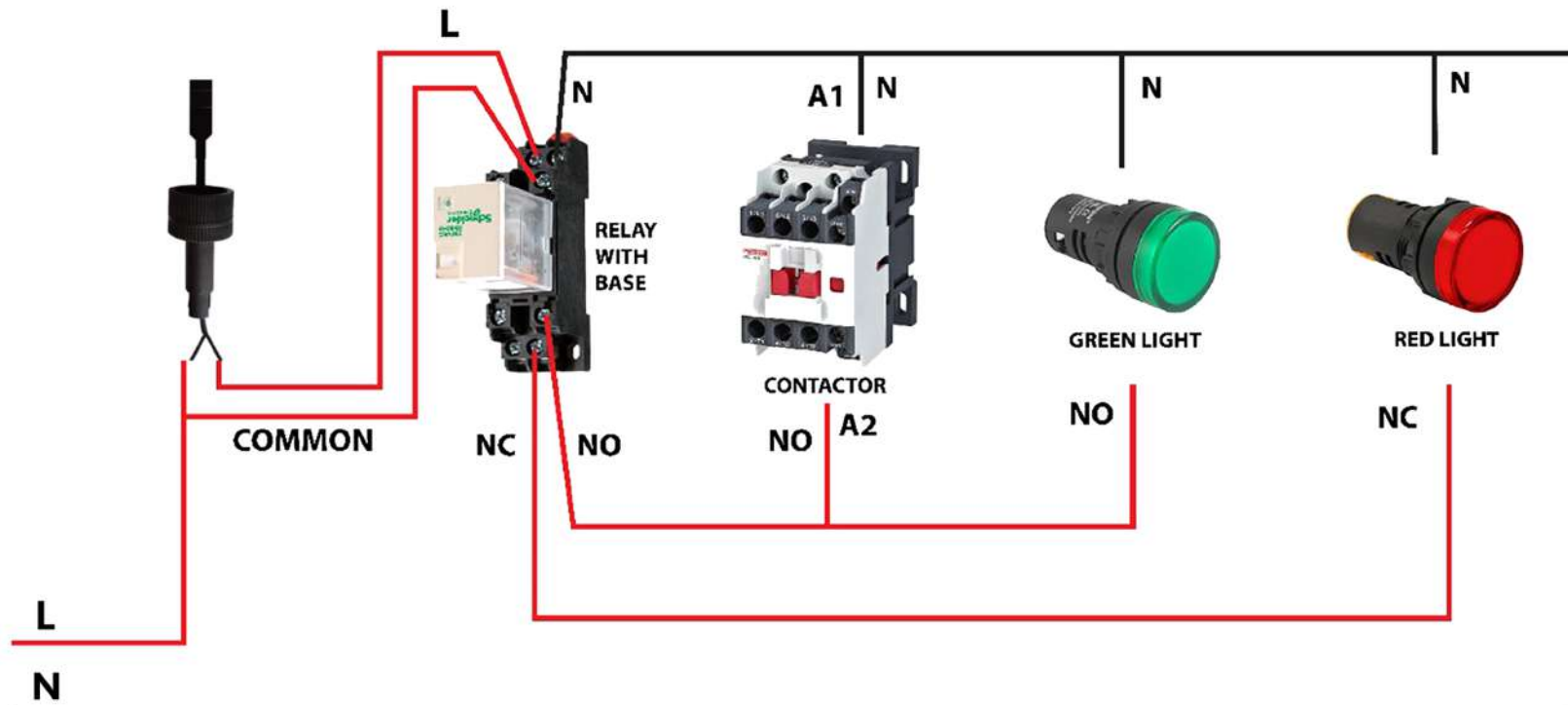
Sprinkler System

EASY INSTALLATION

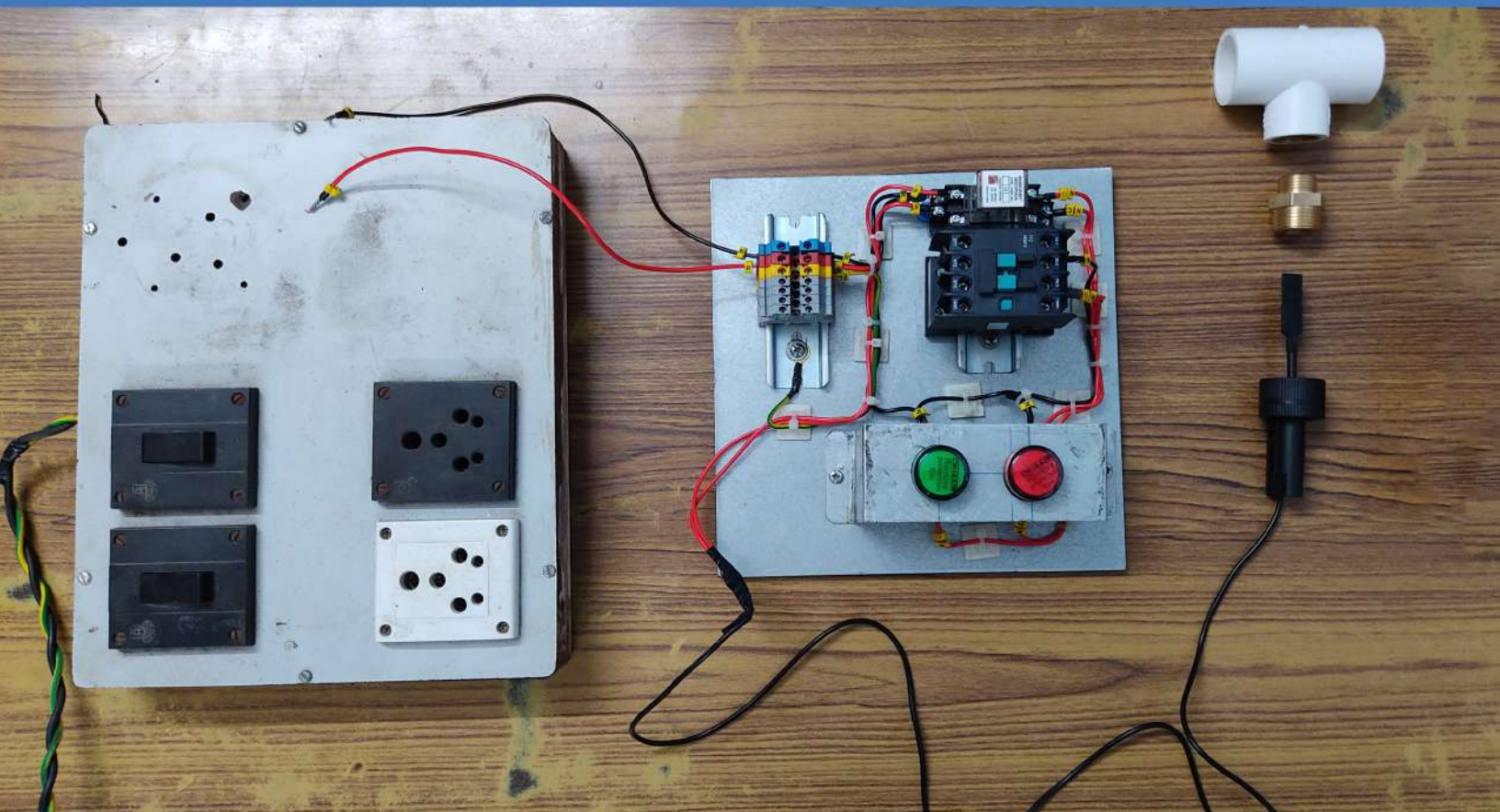


ELECTRIC CIRCUIT - NO & NC CONTACT

Contactor • Relay • Indicator



ELECTRIC CIRCUIT & ASSEMBLY



STANDARD PADDLE FLOW SWITCH



Flow switch consists of magnetic core, rotating impeller, external casing and dry reed pipe. Flow through the sensor activates the magnetic core to trigger switch action, with signal output.

FEATURES :

simple working principle and highly reliable and cheaper price.

APPLICATIONS:

It is used in the control of water circulation, water charging and discharging, water heating, water pump switch on and off of solenoid valve or powering on and off water discharging of electric water heater, solar energy water heater, air condition and other water system.

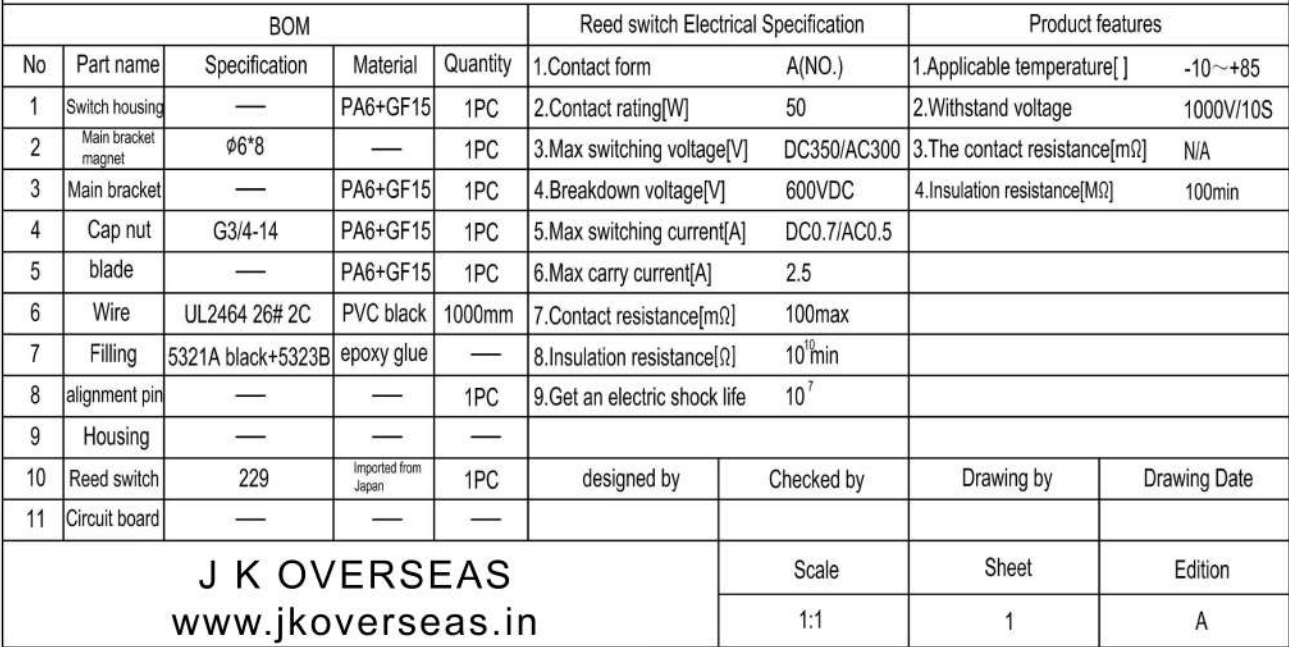
FLOW SWITCH ELECTRICAL SPECIFICATIONS :

Contact Form	NO (Normally Open)
Max Contact Power	50 W
Max Switch Voltage	350 VDC / 300 VAC
Min Breakdown Voltage	600 VDC
Max Switch Current	0.7 ADC / 0.5 AAC
Max Carry Current	2.5 A
Max Contact Resistance	100 mΩ
Min Insulation Resistance	1010 Ω
Get In Electric Shock Life	107 Ω
Electric Life	1 * 10 ⁷ (5 VDC, 10 mA)

FLOW SWITCH FEATURES :

Mounting Position	Vertical
Operating Tempreature	- 10 ~ + 85° C
Applicable Environment Tempreature	- 40 ~ + 120° C
Withstand Voltage	1000 V/10 s
Insulation Resistance	100 min
Min Flow Rate	≥ 1.5 L / Min
Max Carry Pressure	1.2 MPa

Customer		Name	Paddle switch	Type	
----------	--	------	---------------	------	--



LONG PADDLE FLOW SWITCH



Our Long Paddle flow switch has special switch, used especially for Big Diameter Pipes. Flow switch consists of magnetic core, rotating impeller, external casing and dry reed pipe. Flow through the sensor activates the magnetic core to trigger switch action, with signal output.

FEATURES :

Used especially for Small & Big Diameter Pipes Both (Can cut paddle as per Size Requirements). simple working principle and highly reliable and cheaper price.

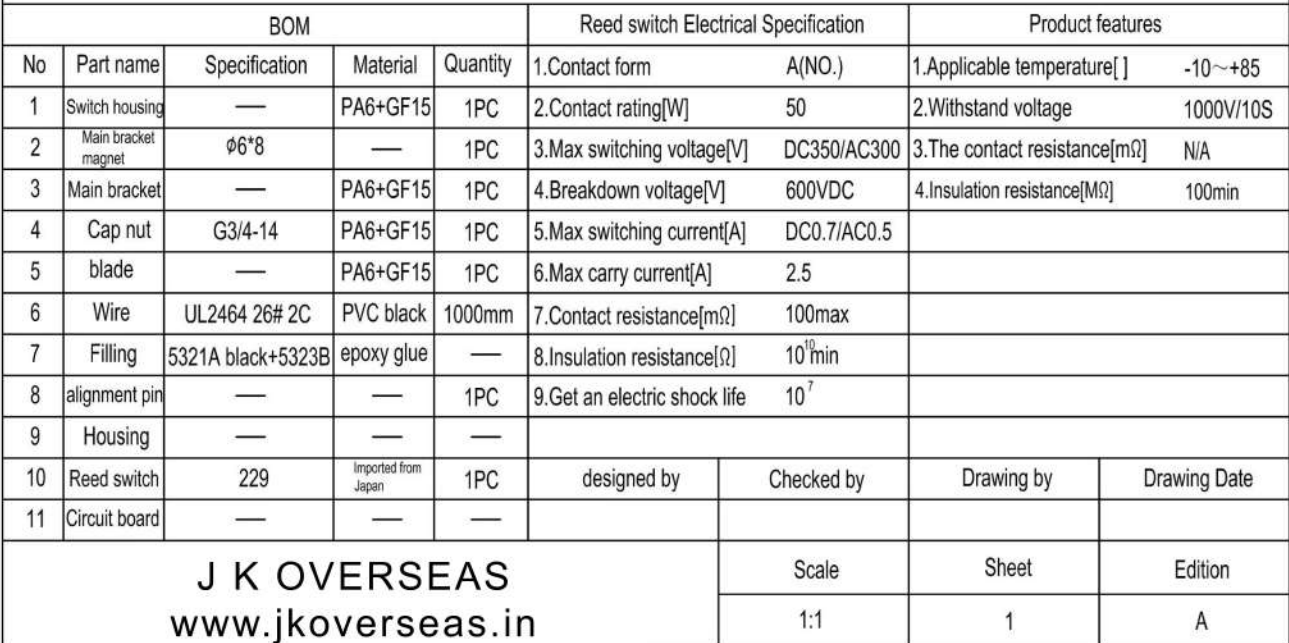
APPLICATIONS:

It is used in the control of water circulation, water charging and discharging, water heating, water pump switch on and off of solenoid valve or powering on and off water discharging of electric water heater, solar energy water heater, air condition and other water system.

Customer

Paddle switch

Type



OUR FLOW SWITCH APPLICATION



We Serve Our Products In Following Markets.

Water Management Industry
Swimming Pool
Electric Water Heater Industry
Solar Water Heater Industry
Water Chiller Industry
Air Condition Industry
Hydraulic Pump, Motor, Oil Tank, Oil Coolers
Fire Sprinkler Systems
Industrial Laser Cooling Systems
Water Sprinkler Systems
Clean Room Filter Systems



BOOSTER PUMP FLOW SWITCH

Committed To Quality,
Pursuing Excellence.



+91 9773483120
+91 9723109373

info@jkoverseas.in
www.jkoverseas.in

BOOSTER PUMP FLOW SWITCH



SPECIFICATIONS :

Screw size	Pipe connect port	Pumo Connect port	power	current
1/2" --1/2"	20mm	20mm	120 W	1.5 A
3/4" ---1/2"	25mm	20mm	120 W	1.5 A



INLINE FLOW SENSOR

Committed To Quality,
Pursuing Excellence.



+91 9773483120

+91 9723109373



info@jkoverseas.in



www.jkoverseas.in

FLOW SWITCH - VERTICAL PIPING



OPERATION :

Flow switch is mainly used in the system to instruct switch on/off according to flow rate.

To set a constant and lowest flow point in the flow switch, when the flow rate runs to the set value, switch on and the system will work, once the flow rate is less than the set value, switch off.

FEATURES :

No wearing and fatiguing parts applied, featuring stable performance and long service time.

Full nylon structure, various liquid corrosion resistances.

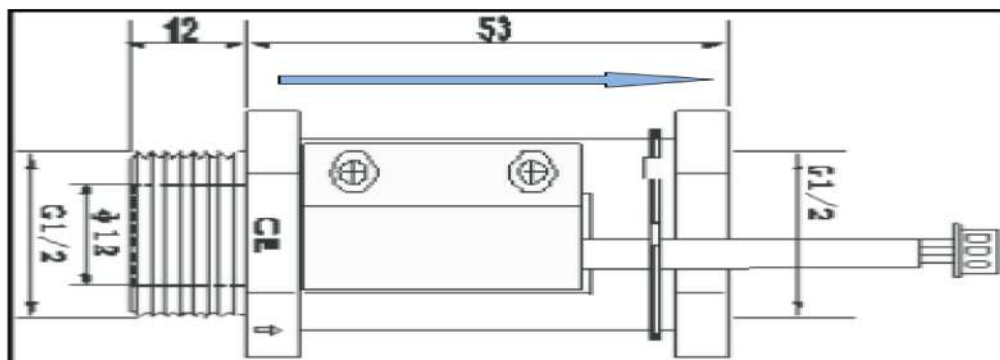
It could be installed vertically.

Max pressure is 1 Mpa.

APPLICATIONS:

The switch can be widely used in water heater, water treatment for environmental protection, Heat pump, water heater, welding equipment, laser equipment and some other systems for monitoring.

SPECIFICATIONS :



Electrical Characteristics	Units	
Material		NYLON
Ring Material		NYLON
Tempe Rating	`C	-30~+85
Max Pressure	MPa	1
Minimum Flow Rate	L/Min.	5 L
Max Flow Rate	L/Min.	30 L
Max Contact Rating	W	1070
Max Switching Voltage		≤230
Max Switching Current	A	0.5
Max contact Resistance	mOhm	200
Electrical Life (at Resistance load)	VDC/mA	1.5x10 ⁷ (20/500)
Cable Type		UL1007-AWG22
Cable Length	mm	254
Cable Color		Black



FLOW SENSOR

Committed To Quality,
Pursuing Excellence.



☎️ +91 9773483120
+91 9723109373

✉️ info@jkoverseas.in
🌐 www.jkoverseas.in

INLINE FLOW SENSOR



FLOW SENSOR ELECTRICAL SPECIFICATIONS :

Electrical Characteristics	Units		
Material		NYLON	
Ring Material		NYLON	
Tempe Rating	° C	-30~+85	
Max Pressure	MPa	1	
Minimum Flow Rate	L/Min.	1 L	
Max Flow Rate	L/Min.	30 L	
Max Contact Rating	W	10	70
Rated Voltage	VDC	≤230	
Max Switching Current	A	0.5	
Max contact Resistance	mOhm	200	
Electrical Life (at Resistance load)	VDC/mA	1.5x10 ⁷ (20/500)	
Cable Type		UL1007-AWG22	
Cable Length	mm	254	
Cable Color		Black	

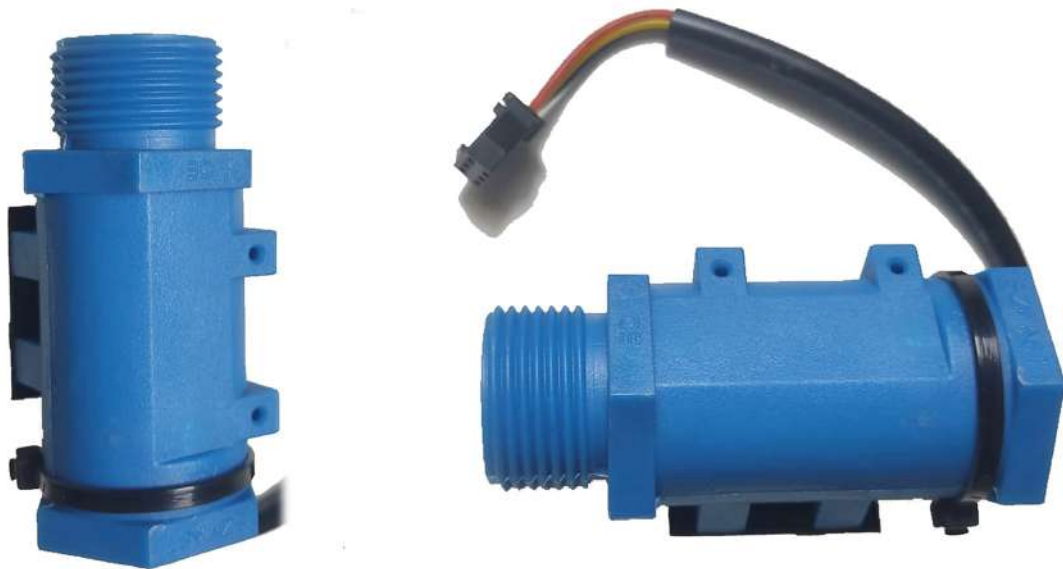
FLOW SENSOR FEATURES :

Specifications	
Rated Voltage	5-24VDC
Rated Current	15mA
Flow Characteristics	F=8Q-3
Product Precision	1 L/Min - 8% , 2-30 L/Min ± 5%
Working Temperature	0 ~+85 °C
Storage Temperature	-40 ~ +125 °C
Max Pressure	1 MPa
Wire	1007 24AWG



INLINE FLOW SENSOR

Committed To Quality,
Pursuing Excellence.



+91 9773483120

+91 9723109373

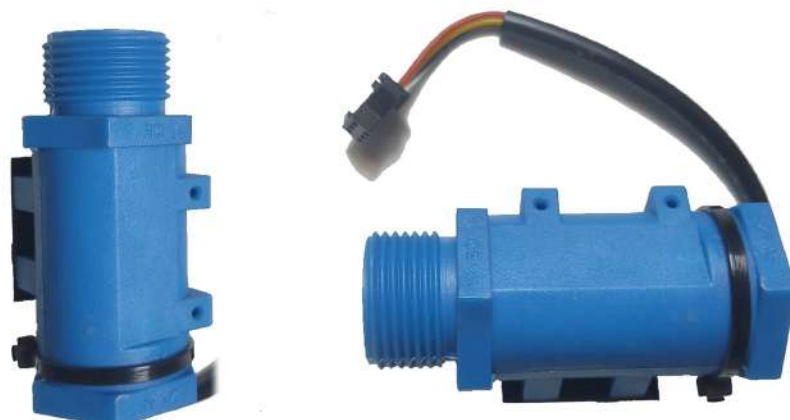


info@jkoverseas.in



www.jkoverseas.in

FLOW SENSOR - VERTICAL PIPING



OPERATION :

Flow switch is mainly used in the system to instruct switch on/off according to flow rate.

To set a constant and lowest flow point in the flow switch, when the flow rate runs to the set value, switch on and the system will work, once the flow rate is less than the set value, switch off.

FEATURES :

No wearing and fatiguing parts applied, featuring stable performance and long service time.

Full nylon structure, various liquid corrosion resistances.

It could be installed vertically.

Max pressure is 1 Mpa.

APPLICATIONS:

The switch can be widely used in water heater, chillers and other circulating water system.

SPECIFICATIONS :

Electrical Characteristics	Units		
Material		NYLON	
Ring Material		NYLON	
Tempe Rating	`C	-30~+85	
Max Pressure	MPa	1	
Minimum Flow Rate	L/Min.	1 L	
Max Flow Rate	L/Min.	30 L	
Max Contact Rating	W	10	70
Max Switching Voltage		≤230	
Max Switching Current	A	0.5	
Max contact Resistance	mOhm	200	
Electrical Life (at Resistance load)	VDC/mA	1.5x10 ⁷ (20/500)	
Cable Type		UL1007-AWG22	
Cable Length	mm	254	



LEVEL SENSOR

Committed To Quality,
Pursuing Excellence.



+91 9773483120
+91 9723109373



info@jkoverseas.in

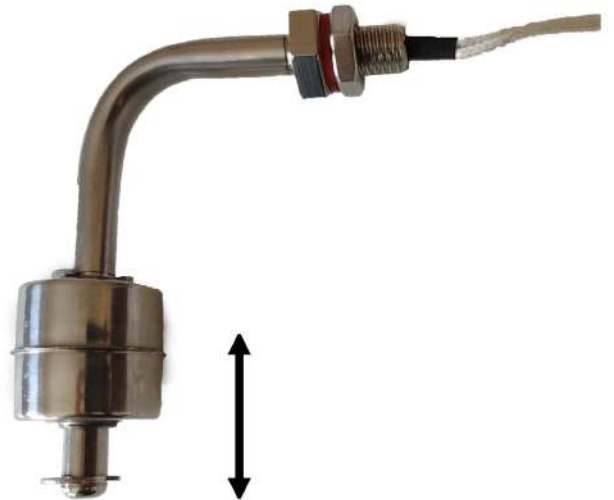
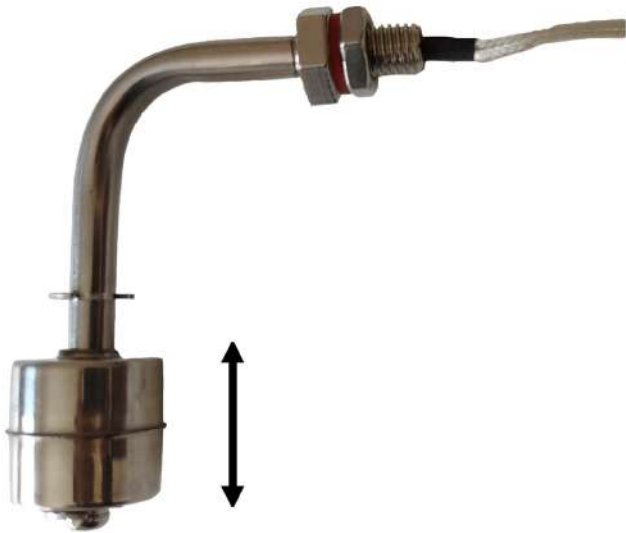


www.jkoverseas.in

SS LEVEL SENSOR - VERTICAL MOUNTED



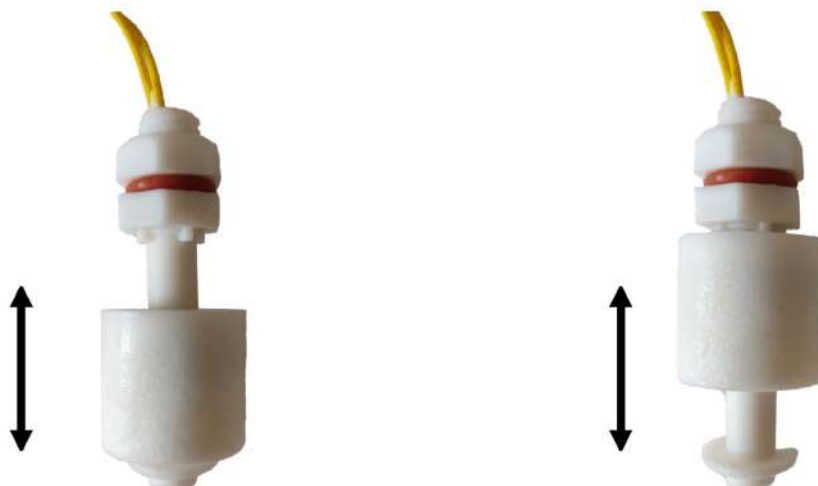
SS LEVEL SENSOR - SIDE MOUNTED



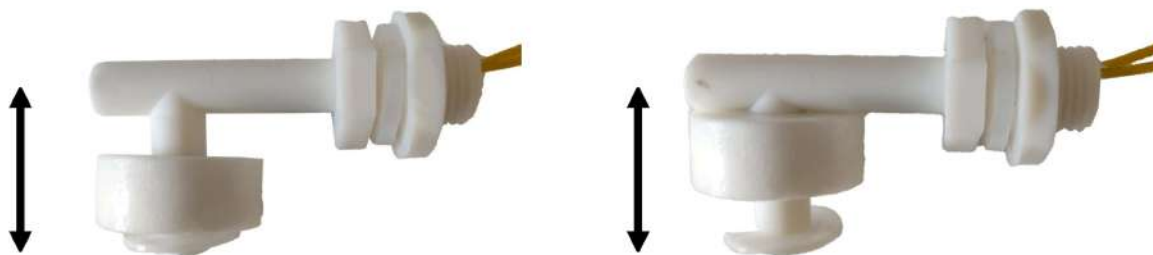
SS LEVEL SENSOR - SIDE MOUNTED



PP LEVEL SENSOR - VERTICAL MOUNTED



PP LEVEL SENSOR - SIDE MOUNTED



FEATURES :

Classic design, compact size Choice of normal open or normal close Customer can define activated distance, cable length and connector Hermetically sealed, suit to tough environment and long life Widely used in liquid level control, air conditioning system, industrial process control.

APPLICATIONS:

Air conditioner, household appliances, equipment water level control switch, liquid level sensor.

SPECIFICATIONS :

Data Scan:	1A1	2A1
Max Contact Rating	10W	50W
Max Switching Voltage	100VDC	220VDC
Max Switch Current	0.5A	1.5A
Mac Breakdown Voltage	220VDC	300VDC
Max Carry Current	1.0A	3.0A
Max Contact Resistance	100mΩ	100mΩ
Temperature Rating	-30~+125°C	



OPTICAL LEVEL SENSOR

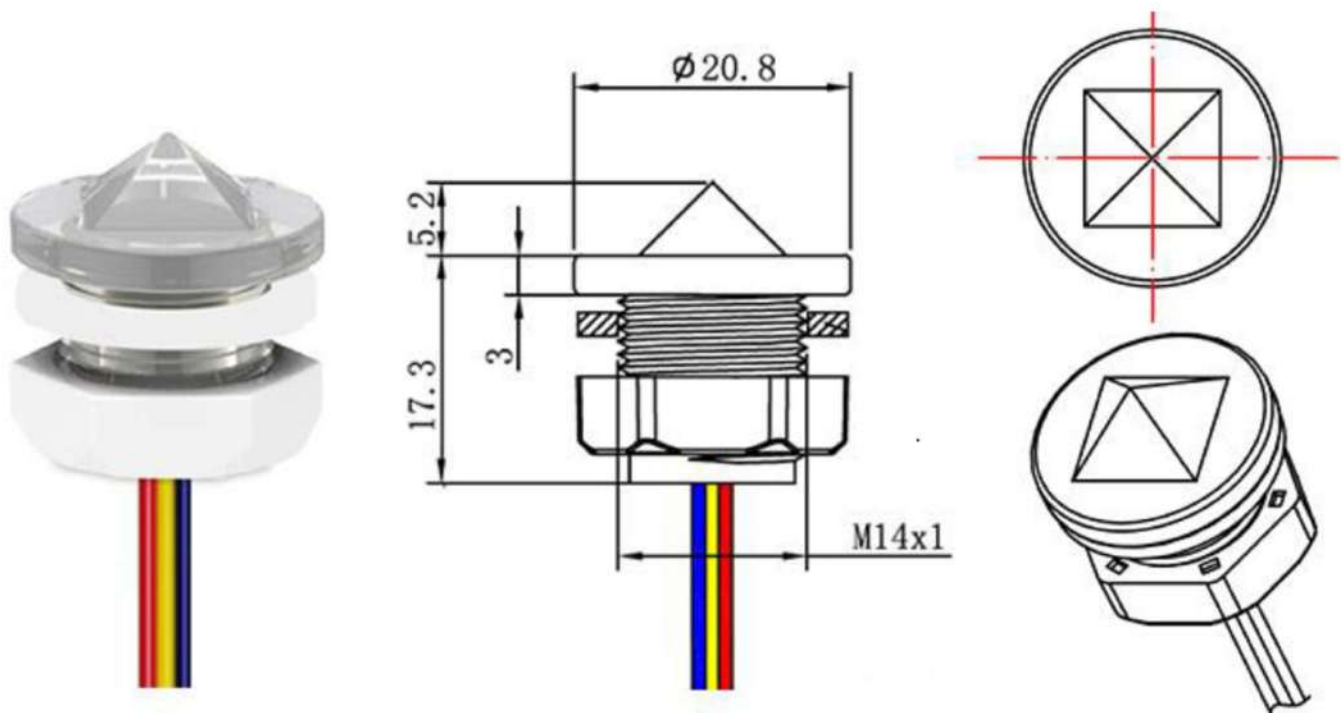
Committed To Quality,
Pursuing Excellence.



☎️ +91 9773483120
+91 9723109373

✉️ info@jkoverseas.in
🌐 www.jkoverseas.in

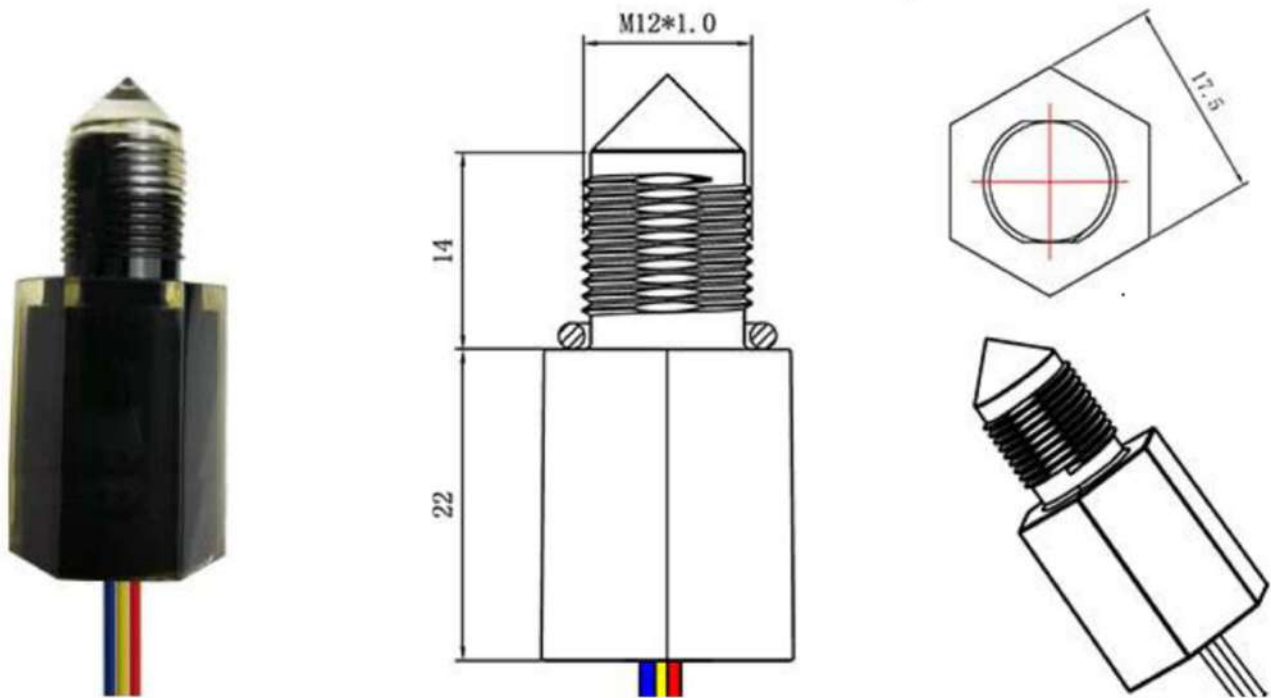
OPTICAL LEVEL SENSOR



ELECTRIC SPECIFICATION:

Rating Voltage	DC5V
Operating Current	<20mA
output voltage in water	<0.3V
output voltage in air	>4.5V
Liquid detection sensitivity	$\pm 1\text{mm}$
output signal	Analog
Waterproof level	IP67
Operating temperature	-20~80°C
Thread/opening size	14mm
Product lifetime :	50,000Hrs< ($\approx 5.7\text{years}$)

OPTICAL LEVEL SENSOR



ELECTRIC SPECIFICATION:

Output Signal	TTL
Rating Voltage	DC5V
Operating Current	<15mA
output voltage in water	<0.3V
output voltage in air	>20V
Liquid detection sensitivity	±1mm
output signal	Analog
Waterproof level	IP67
Operating temperature	-20~80°C
Thread/opening size	12mm
Product lifetime :	50,000Hrs< (≈5.7years)



J K OVERSEAS

Office No : B 1018, " The One World ",
Ayodhya Chowk, 150 ft Ring Road.
Rajkot - 360006

+91 9773483120
+91 9723109373

info@jkoverseas.in
jkoverseas16@gmail.com

<https://jkoverseas.in/>



J K OVERSEAS[®]



<https://jkoverseas.in/>